

SP-5500WA Advanced Display

SP5000 SERIES



Features:

- WVGA Display TFT Touch Panel
- 262,144 colors
- 12-24 Vdc input voltage
- 0-60C operating temperature
- Compatible with power or open box modules
- Embedded mounting clips for easy installation
- WVGA provides higher resolution than SVGA

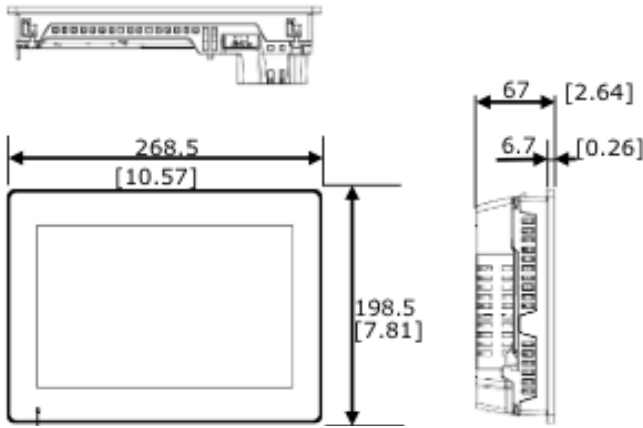
Performance Specifications

| | | |
|--|---|-----------------|
| Model | SP-5500WA | |
| Part Number | PFXSP5500WAD | PFXSP5500WADF0C |
| Graphics Display Resolution | 1,280 x 800 pixels (WVGA) | |
| Display Type and Size | TFT Color LCD 10" | |
| Display Colors | 262,144 colors | |
| Effective Display Area | W217.0 x H135.6mm (W8.54 x H5.34 in.) | |
| Touch Screen | Resistive film (analog) | |
| Backlight | White LED (Not user replaceable. When replacement is required, contact your local distributor.) | |
| Backlight Service Life | 50,000 hours or more (continuous operation at 25 °C [77 °F] before backlight brightness decreases to 50%) | |
| Brightness | Max.:400cd(Typ)Min.:4cd(Typ) 0...100 (Adjusted with touch panel or software) ^{*1} | |
| <small>*1 The maximum and minimum brightness Value is the reference Value, because there are individual differences by the liquid crystal.</small> | | |

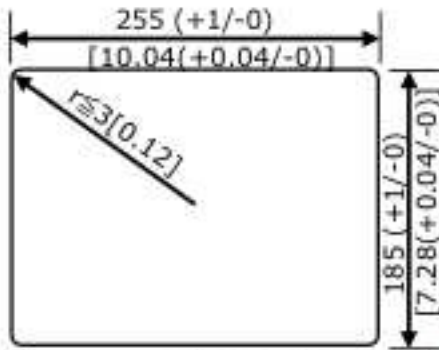
General Specifications

| | | |
|---|---|-----------------|
| Models | SP-5500WA | |
| Part Number | PFXSP5500WAD | PFXSP5500WADF0C |
| Conformal Coating | - | Yes |
| Input Voltage | 12-24 Vdc (limits 10.8 -29.9 Vdc) | |
| Voltage Drop | 12 Vdc: 1.25 ms or less/ 24 Vdc: 5 ms or less | |
| In-Rush Current | 30 A or less | |
| Voltage Endurance | 1,000 Vac, 20 mA for 1 minute (between charging and FG terminals) | |
| Insulation Resistance | 500 Vdc, 10 MQ or more (between charging and FG terminals) | |
| Power Consumption ^{*1} | 8.5W (max), 2.5 or less (When screen turns off the backlight (Standby Mode), 5W or less (when screen backlight 20%) | |
| Surrounding Air Temperature | 0...60 °C [32... 140 °F] | |
| Storage Temperature | -20...60 °C [-4... 140 °F] | |
| Certifications | CE, RoHS, GOST-R, UL/c-UL, KC | |
| Ratings ^{*2} | IP66F, IP67F, TYPE 4X (Indoor Use Only)/13 (on the front panel when properly installed in an enclosure), ANSI/ISA 12.12.0 1, UL508, EN61000-6-4, EN61000-6-2, Class 1 Div 2 Groups A, B, C, and D | |
| Surrounding Air and Storage Humidity | 10%...90% RH (Non condensing, wet bulb temperature 39 °C [102.2 °F] or less) | |
| Dust | 0.1 mg/m3 (10-7 oz/ft3) or less (non-conductive levels) | |
| Pollution Degree | For use in Pollution Degree 2 environment | |
| Corrosive Gas | Free of corrosive gases | |
| Atmospheric Pressure (Operating Altitude) | 800...1,114 hPa (2,000 m [6,561 ft] or lower) | |
| Vibration and Shock Resistance | IEC/EN 61131-2 compliant | |
| Electrostatic Discharge Immunity | Contact Discharge Method: 6 kV (IEC/EN 61000-4-2 Level 3) | |
| Weight ^{*4} | 2.5kg (5.5 lb) or less | |
| External Dimensions ^{*3} | W268.5 x H198.5 x D67mm (W10.57 x H7.81 x D2.64 in.) | |
| Panel Cut Dimensions | W255 x H185 mm (W10.04 x H7.28 in.) | |

External Dimensions



Panel-Cut Out Dimensions



Panel thickness area: 1.6...5 [0.06...0.2]^{*5}

^{*5} Even if the installation wall thickness is within the recommended range for the "Panel Cut Dimensions", depending on wall's material, size, and installation location of this product and other devices, the installation wall could warp. To prevent warping, the installation surface may need to be strengthened.

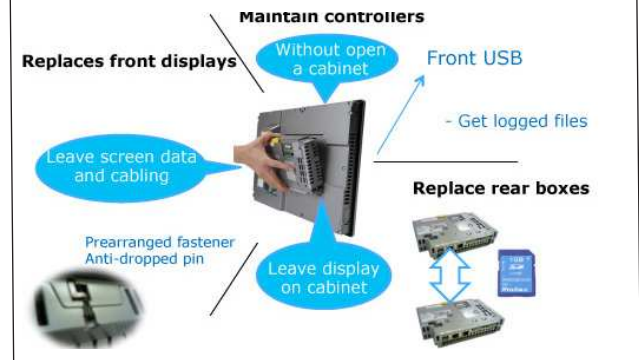
Ordering Information

| Type | Model Numbers | Description |
|----------------------------------|-----------------|---|
| SP-5500WA | PFXSP5500WAD | 10-inch TFT, 262,144 colors, WVGA 1280 x 800 pixels, Analog Touch Panel. |
| SP-5500WA with Conformal Coating | PFXSP5500WADFOC | 10-inch TFT, 262,144 colors, WVGA 1280 x 800 pixels, Analog Touch Panel, with conformal coating |

Options

| Part Number | Product Name | Description |
|--------------|--------------------------------------|---|
| CA4-ATM10-01 | Panel Cutout Adapter | Panel cutout adapter for mounting 10-inch Premium Display in cutout for GP-2500/2600 series, AGP-3500L/ AGP-3500S/AGP-36*0T/ AGP-36*0U. |
| PFXZCDDS102 | 10-inch Wide Screen Protection Sheet | Disposable, dirt-resistant sheet for the display (5 sheets/ set) |
| PFXZCDWG102 | 10-inch Wide Installation Gasket. | Provides dust and moisture resistance when SP is installed into a solid panel (1 piece) |

Modular Design and Easy Maintenance



KOMTEK LLC,
 Saint-Petersburg, Pulkovskoe shosse 30/4 office 108
 Phone: +7 812 336 47 06
 e-mail: office@komtek-spb.ru
 web : www.komtek-spb.ru