

GP4000M Rear Module



Features:

- Blind HMI node that can collect data for Pro-face Remote HMI App on Tablets/Smart phone
- Factory Gateway - allows connectivity for multiple protocols and can bridge those protocols across different networks
- Supports a large selection of Serial or Ethernet protocols. (Set up to 2 protocols)
- USB Interfaces can be used for project transfer and to connect BCR scanners, printers, and memory devices.
- Connectivity to EZ-Series USB Solutions.
- Programmed with the versatile GP-Pro EX Screen Development Software

Specifications

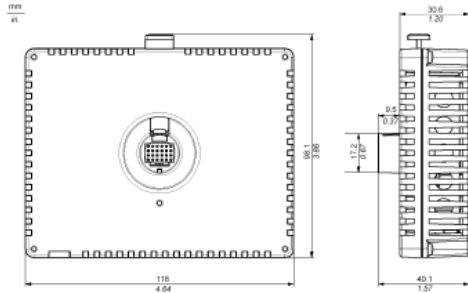
Order Numbers		PFXGM4B01D
Memory	Application memory	FLASH EPROM 8 MB ^{*1}
	Data Backup	nvSRAM 128 KB ^{*3}
	Logic Program Area	FLASH EPROM 132 KB ^{*2} (Equivalent to 15,000 steps)
Inter- faces	Serial (COM1)	Asynchronous Transmission: RS-232C/422/485, Data Length: 7 or 8 bit, Stop Bit: 1 or 2 bit, Parity: none, Odd or Even, Data Transmission Speed: 2,400 to 115, 200bps, 187,500 bps, Connector: D-Sub9 (plug)
	Ethernet (LAN)	IEEE802.3i/ IEEE802.3u, 10BASE-T/100BASE-TX, Connector: Modular jack (RJ-45) x 1
	USB (Type A)	USB2.0, Connector: Type A x 1, Power Supply Voltage: 5 Vdc ±5%, Maximum Transmission Distance: 3m (9.84 ft.) or less
	USB (mini-B)	USB2.0, Connector: mini-B x 1, Maximum Transmission Distance: 5m (16.40 ft.) or less
Clock Accuracy		Uses the clock of an external device ^{*4}

^{*1} Capacity available for user application. The capacity depends on how many fonts you load from Editor software.
^{*2} Up to 60,000 steps can be converted in software. However, this reduces application memory capacity (for screen data) by 1MB.
^{*3} Application memory can provide 128KB for Data Backup. For further information, please refer to the GP-Pro EX reference manual.
^{*4} Set up the "Clock Updates" feature with the Editor software. Please refer to the GP-Pro EX reference manual "Common" - "Clock Update Settings" for details.

General Specifications

Model	PFXGM4B01D
Input Voltage Limits	20 to 28.8 Vdc
Rated Voltage	24 Vdc
Power Consumption	1.6 W or less
Ambiant Operating Temp	85 % RH (Wet bulb temperature: 39 C or less - no condensation)
Storage Humidity	85 % RH (Wet bulb temperature: 39 C or less - no condensation)
Electrostatic Discharge Immunity	IEC61000-4-2 6kV direct contact 8kV air contact
Air Pressure (altitude range)	800 to 1,114 hPa (2,000 m (6,561 ft) or lower)
Vibration & Shock Resistance	EN61131-2 compliant, IEC/EN 61131-2 compliant 147 m/s ² , X,Y,Z 3 directions
Certifications	UL, CSA, CE
Cooling Method	Natural Air Circulation
Grounding	Functional grounding: Grounding resistance of 100 Ohms, 2mm ² (AWG14) or thicker wire.
Weight	0.21 kg (0.46 lbs) or less
Warranty	Two year standard

GP4000M Rear Module Dimensions



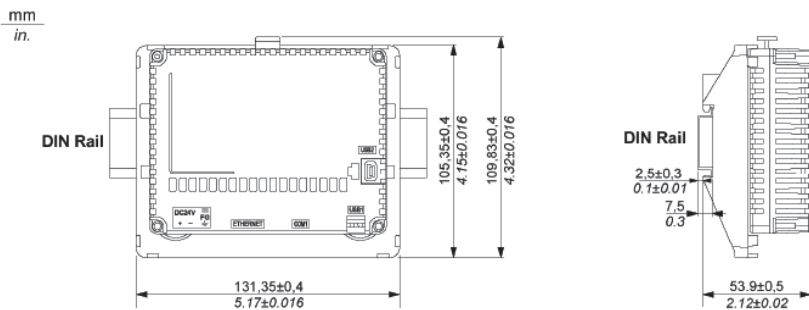
Ordering Information

Part Number	Description
PFXGM4B01D	GP4000M Rear Module

Optional Items

Part Number	Product Name
EX-ED-Vxx	GP-Pro EX Development Software (download version), xx refers to current version
EX-ED-Vxx-DVD	GP-Pro EX Development Software (download version + DVD backup media), xx refers to current version
PFXZXMADSA1	DIN rail installation for rear modules in non-display operation.

GP4000M Rear Module with DIN Rail Dimensions



Software Compatibility



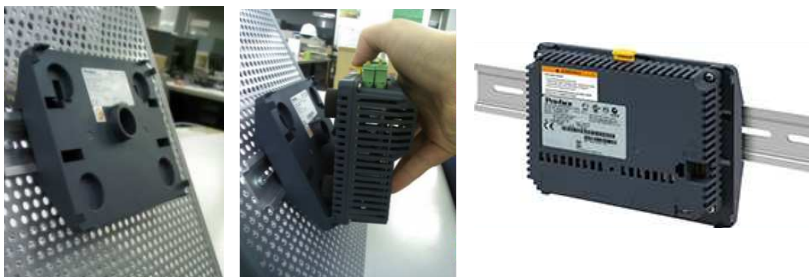
Powered By

Screen Editor
GP-Pro EX

HMI Development Software

(Version 3.12 or newer)

DIN Rail Mount



Use as a Blind HMI

Use GP4000M Rear Module as a blind HMI node that can collect data for the Pro-face Remote HMI App on a tablet or smart phone.



KOMTEK LLC,
Saint-Petersburg, Pulkovskoe shosse 30/4 office 108
Phone: +7 812 336 47 06
e-mail: office@komtek-spb.ru
web : www.komtek-spb.ru