

SP-5700TP Premium Display

SP5000 SERIES



Features:

- XGA Display TFT Touch Panel
- 16 million colors
- Compatible with power or open box modules
- USB access via front bezel
- Auto-scaling functionality
- Embedded mounting clips for easy installation

Performance Specifications

Model	SP-5700TP	
Part Number	PFXSP5700TPD	PFXSP5700TPDF0C
Graphics Display Resolution	1,024 x 768 pixels XGA	
Display Type and Size	TFT Color LCD 15"	
Display Colors	16 Million Color	
Effective Display Area	W304.1 x H228.1 mm (W11.97 x H8.98 in.)	
Touch Screen	Resistive film (analog, multi-touch)	
Backlight	White LED	
Backlight Service Life	50,000 hours or more (continuous operation at 25 °C [77 °F] before backlight brightness decreases to 50%)	
Brightness	Max.:400cd(Typ) Min.:4cd(Typ) 0...100 (Adjusted with touch panel or software)*1	
Front USB	Type A (V2.0) x1, Mini B (V2.0) x1	

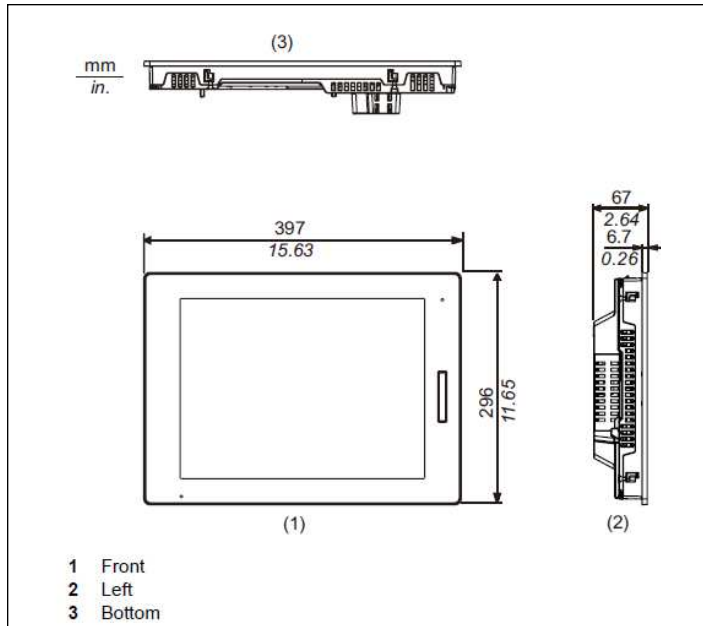
*1 The maximum and minimum brightness Value is the reference Value, because there are individual differences by the liquid crystal.

General Specifications

Models	SP-5500TP	
Part Number	PFXSP5700TPD	PFXSP5700TPDF0C
Conformal Coating	-	Yes
Input Voltage	12-24 Vdc (limits 10.8 -29.9 Vdc)	
Voltage Drop	12 Vdc: 1.25 ms or less/ 24 Vdc: 5 ms or less	
In-Rush Current	30 A or less	
Voltage Endurance	1,000 Vac, 20 mA for 1 minute (between charging and FG terminals)	
Insulation Resistance	500 Vdc, 10 MQ or more (between charging and FG terminals)	
Power Consumption	57W or less (display module with box module)*1 22W or less (display module only)	
Surrounding Air Temperature	0...60 °C [32...140 °F]	
Storage Temperature	-20...60 °C [-4...140 °F]	
Certifications	CE, ATEX, RoHS, GOST-R, UL 508/c-UL, CSA C22.2 N°142, KC, EAC, ABS, BV, CCS, DNV, GL, LR, RINA, NK	
Ratings	IP65 (IP65F, IP66F or IP67F, when use enhanced front USB cover), EN61000-6-4, EN61000-6-2, CSA C22.2N°213, ANSI/ISA 12.12.01, Class 1 Div 2 Groups A, B, C, and D when installed as directed.	
Surrounding Air and Storage Humidity	10%...90% RH (Non condensing, wet bulb temperature 39 °C [102.2 °F] or less)	
Dust	0.1 mg/m ³ (10-7 oz/ft ³) or less (non-conductive levels)	
Pollution Degree	For use in Pollution Degree 2 environment	
Corrosive Gas	Free of corrosive gases	
Atmospheric Pressure (Operating Altitude)	800...1,114 hPa (2,000 m [6,561 ft] or lower)	
Vibration and Shock Resistance	IEC/EN 61131-2 compliant	
Electrostatic Discharge Immunity	Contact Discharge Method: 6 kV (IEC/EN 61000-4-2 Level 3)	
Weight	4.5kg (9.9 lb) or less	
External Dimensions	W397 x H296 x D67 mm(W15.6 x H11.7 x D2.64 in.)	
Panel Cut Dimensions	W383.5 x H282.5 mm(W15.1 x H11.12 in.)*2 Panel thickness area:1.6...5 mm (0.06...0.2 in.)*3	
Warranty	Two (2) years	

*1 The power consumption for the combined unit of Box Module and Display Module equals the sum of the power consumption for the Modules. *2 Even if the installation wall thickness is within the recommended range for the "Panel Cut Dimensions", depending on wall's material, size, and installation location of this product and other devices, the installation wall could warp. To prevent warping, the installation surface may need to be strengthened.*3 The weight for the combined unit of Box Module and Display Module equals the sum of the weight for the Modules.

External Dimensions



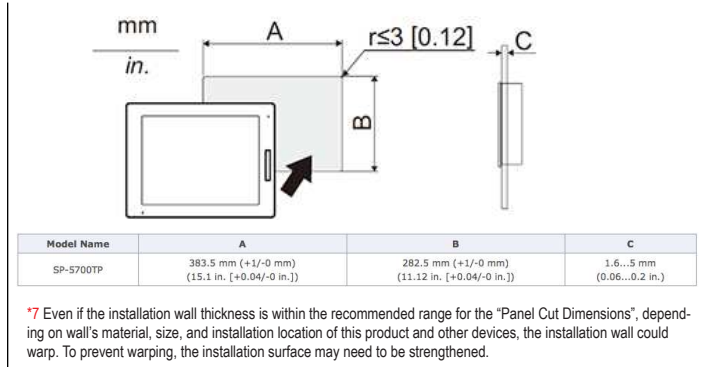
Ordering Information

Type	Model Numbers	Description
SP-5700TP	PFXSP5700TPD	15-inch TFT, 16M colors, XGA 1024 x 768 pixels, Analog Touch Panel(Multi touch), Front USB A/mini-B I/F x 1 each, DC24V
SP-5700TP with Conformal Coating	PFXSP5700TPDF0C	15-inch TFT, 16M colors, XGA 1024 x 768 pixels, Analog Touch Panel(Multi touch), Front USB A/mini-B I/F x 1 each, DC24V with conformal coating

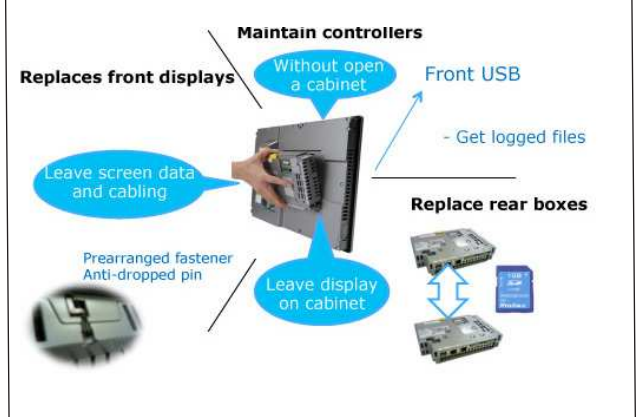
Options

Part Number	Product Name	Description
PFXZCDCVUS1	Enhanced Front USB Cover (With Screw)	Front USB cover with fixing screw, corresponding to IP66F, IP67F, Type 1/4X Indoor use only /I3 or ATEX certification (5 pieces/set)
PFXZCDWG151	15-inch Installation Gasket	Provides dust and moisture resistance when SP is installed into a solid panel (1 piece)

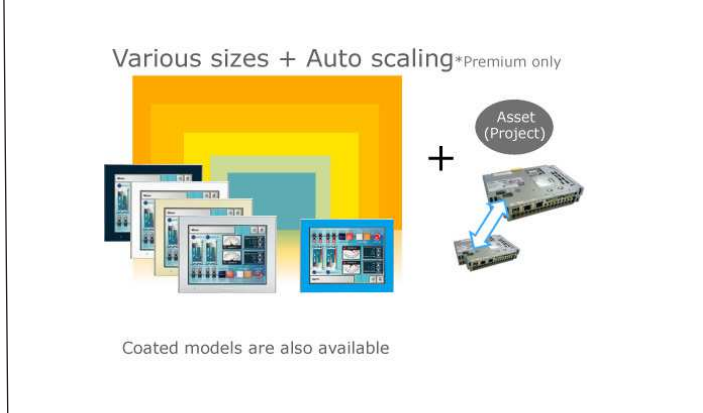
Panel Cut Dimensions



Modular Design and Easy Maintenance



Multiple Screen Size Options



KOMTEK LLC,
 Saint-Petersburg, Pulkovskoe shosse 30/4 office 108
 Phone: +7 812 336 47 06
 e-mail: office@komtek-spb.ru
 web : www.komtek-spb.ru